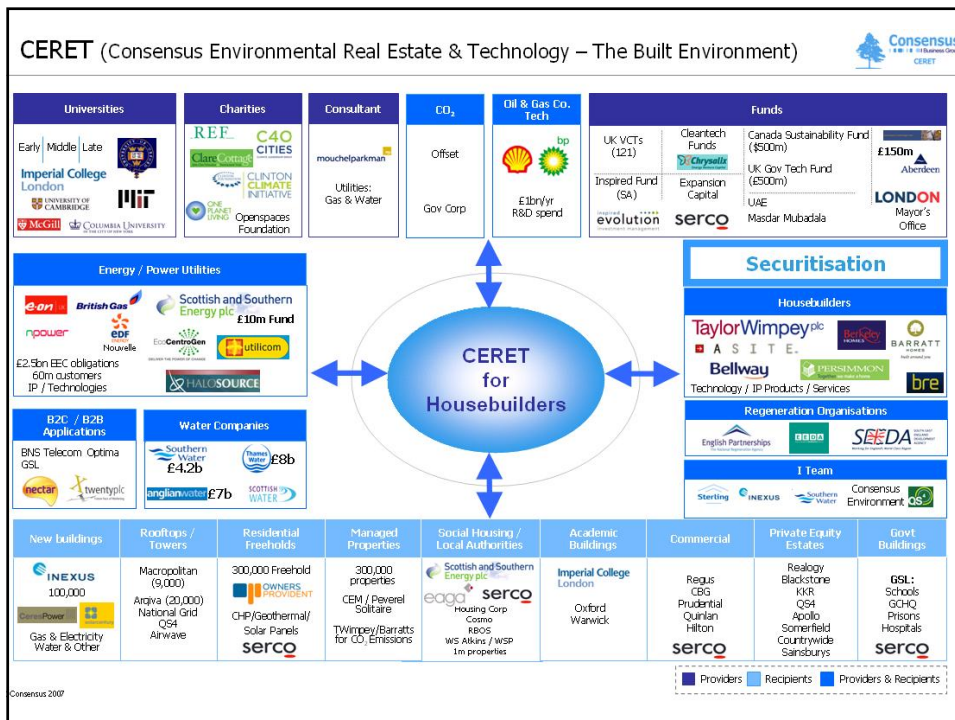
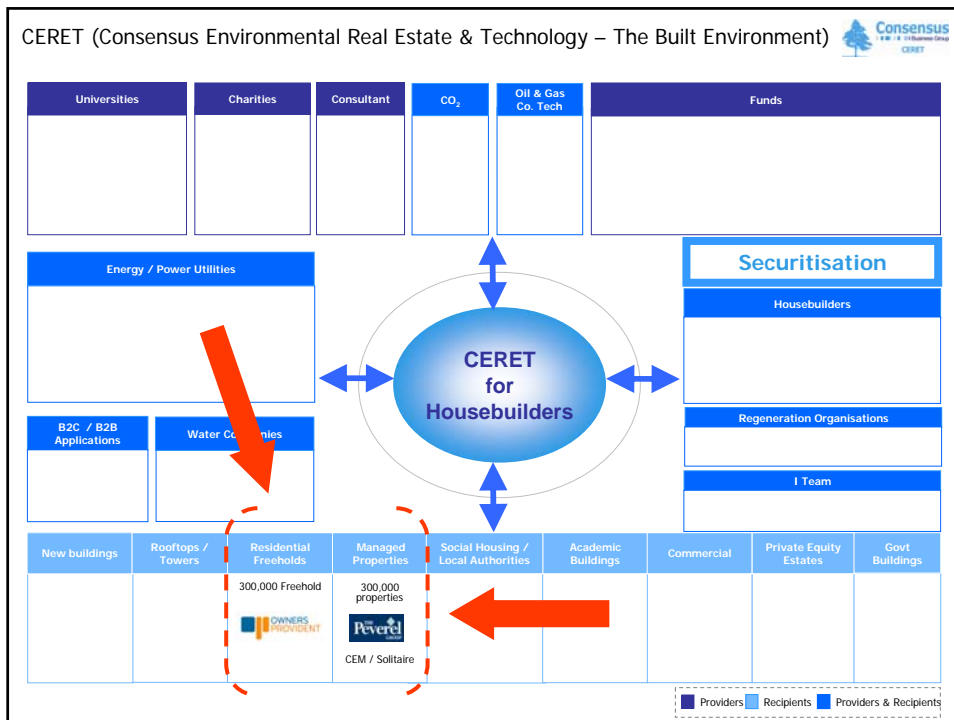


Consensus Environmental Real Estate Technology

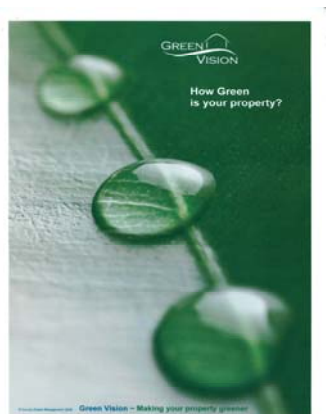
“meeting the carbon reduction targets - how can the energy efficiency of the existing housing stock be dramatically improved?”





Green Surveys

Engaging with energy efficiency through property management companies.



- This is carried out using the “Green Vision” survey, which is produced by one of the Consensus Business group management companies, Country Estates.
- This surveys managers and tenants to discover where energy savings can be made, and efficiencies can be maximised
- Areas covered include waste and recycling, water use, heating and cooling devices, and lighting

Typical Questions

- Are there leisure facilities on site?
- How is hot water produced?
- How are the apartments heated?
- Are the common areas heated and/or cooled?
- Are boilers more than 15 years old?
- Is the common area lighting controlled by occupancy sensors?
- Is common area water use separately metered?
- Are bike racks provided?
- Is double glazing installed?
- Are external walls insulated?
- Has thermal imaging been carried out?
- Is external lighting controlled by daylight sensors?

Lighting

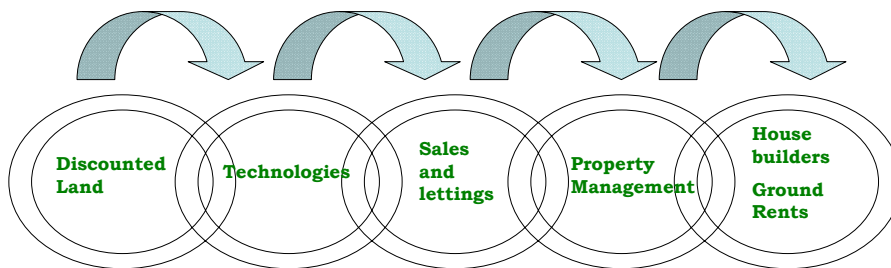
- Artificial lighting accounts for 19% of worldwide electricity consumption.
- According to the Department for the Communities and Local Government (DCLG), housing accounts for 27% of UK CO² emissions.
- 'The Green Vision' survey used on one specific site in South-East London identified the opportunity to create a reduction in CO² amounting to 127,700 kg of CO² per annum, which amounts to an annual cost saving of £34,998.60
- The total CO² emissions for this particular site before the implementation of 'The Green Vision' survey was calculated to be 937,395.27. The savings on lighting alone amounted to 13.6% of total consumption
- Large savings such as these can only be achieved through systematic measurement and implementation of energy saving technologies.

CERT Obligation

By working closely with the utility companies we can encourage our tenant base to avail themselves of the opportunities for CO² reduction through the implementation of technology within the home funded through the CERT scheme (£3.5 billion over three years)

- Lighting
- Heating
- Insulation
- White goods

Consensus can also increase the variety of technology applicable from it's own sources.



Utilities/
Petrochemical
Companies

English
Partnerships

Development
Agencies inc.

University
Tech
Transfer

Funds

Mouchel
Parkman

REF

Chesterton
Farley

ERA

Sterling

DCM

Peverel

Solitaire

Pembertons

Country

Estate
Management

Stonedale

SMPA

UK
Housebuilders

